

## of Obsolete Crap

[Home](#)
[Links](#)
[Nixie Stuff](#)
[Dekatron Stuff](#)
[Magic Eye Stuff](#)
[VFD Stuff](#)
[Miscellaneous Projects](#)

# Power Supply Kit

The image shows a red PCB with various electronic components. Dimensions are indicated by red arrows: 1.2" (30mm) in width and 1.35" (34mm) in height. The PCB features a large black electrolytic capacitor (C1), a smaller electrolytic capacitor (C2), a 7805 voltage regulator (U1), and several resistors (R1-R6). A 5-pin header (P1) is located at the bottom, with pins labeled 1 through 8. The labels for the pins are: VIN+, COM, Pulse, VOUT, RX, and COM. The PCB is populated with various components including a 7805 voltage regulator, a 5-pin header, and several resistors and capacitors.

1.2" (30mm)

1.35" (34mm)

P1 1 2 3 4 5 6 7 8

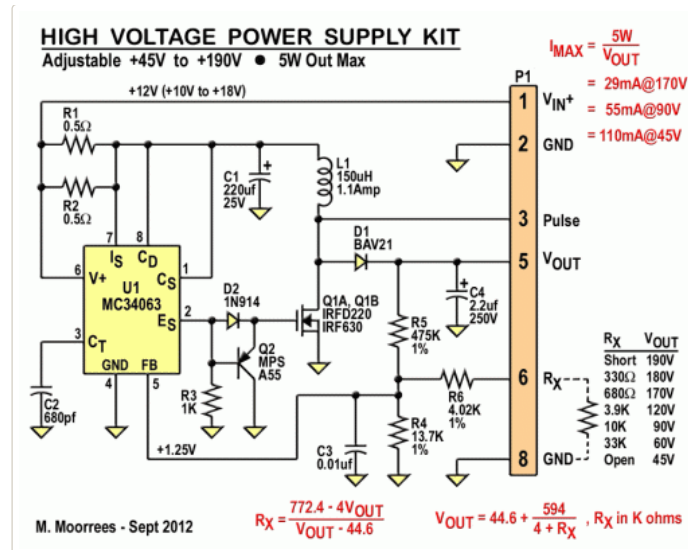
VIN+  
COM  
Pulse  
VOUT  
RX  
COM

This kit allows you to build a regulated switch-mode power source, that will convert a, nominal, 12VDC input up to any voltage from 45V to 190V. With the components included in the kit, it can output 5W of power, with an average efficiency of 75% (or ~6.7W in). The difference of 1.7W (6.7W – 5W) will escape as waste heat.

**Sept 12, 2013: The NK01A (Revision A) has been released. The output has been increased. Its recommended that the maximum output should be 5.5W, though its been tested and survived with an output of 6.4W. As noted, above, if a 16V supply is used, the maximum suggested output can be upto 7.2W.**

Note: D2 comes pre-installed on the board on the older (non-A) version. Not pre-installed, on the current "A" version. Please be careful, not to mix up the two glass (TO-35) diodes. D1 is the BAV21, and will have taped labels on the leads. D2 is a 1N4148 (1N914). D1 is faster, but D2 has the higher PIV rating.

<http://threeneurons.wordpress.com/nixie-power-supply/hv-supply-kit/>



The circuit is based on the Motorola MC34063 switch-mode controller chip. This chip, has been available since the 80s. The circuit is a basic *Boost Supply*, where a single winding inductor is used. It works by storing energy in the inductor. This energy is proportional to the square of the current flowing thru the coil. Current is allowed to flow thru the current, by switching Q1 "On". An inductor won't allow an abrupt change in current, so if the switch, Q1, was "off", the current will ramp up from zero. Ideally, when the current reaches the maximum the coil can handle (called the saturation current), Q1 should be switched "off". Again, the current can not change abruptly. When turned "off", the inductor will dump its energy (stored in its magnetic field). It will ramp down, from that maximum current. Its only path is thru D1, and to get maintain that initial current, the voltage, will abruptly rise to some high value. (note: to the newbies: *voltage and current are two different things*. Related, but different) Voltage is pressure, while current is flow rate.

In this circuit, the maximum current, is roughly timed out, by the selection of C2. The voltage is regulated by a network of resistors (R4, R5, & R6), plus an optional RX. RX is used when any voltage other than the supplies two extremes (45V:open, or 190V:shorted) is desired. The schematic shows resistor values for other voltage selections, and a formula, if you want something different. RX is connected across pin 6 and GND (circuit common, either pin 2 or pin 8). This circuit is also the MK1.5 (mark 1.5) version, of the MC34063 "nixie supply". The addition of D2 and Q2, allow this circuit to quickly switch Q1 (the power FET) "ON", and more importantly "Off". In so doing, it is a vast improvement over the MK1 (mark 1) designs, floating on the web. The MK1 designs are only good to about half the power of this kit's circuit.

Parts List – of parts included in the kit ([click on list to enlarge](#)):

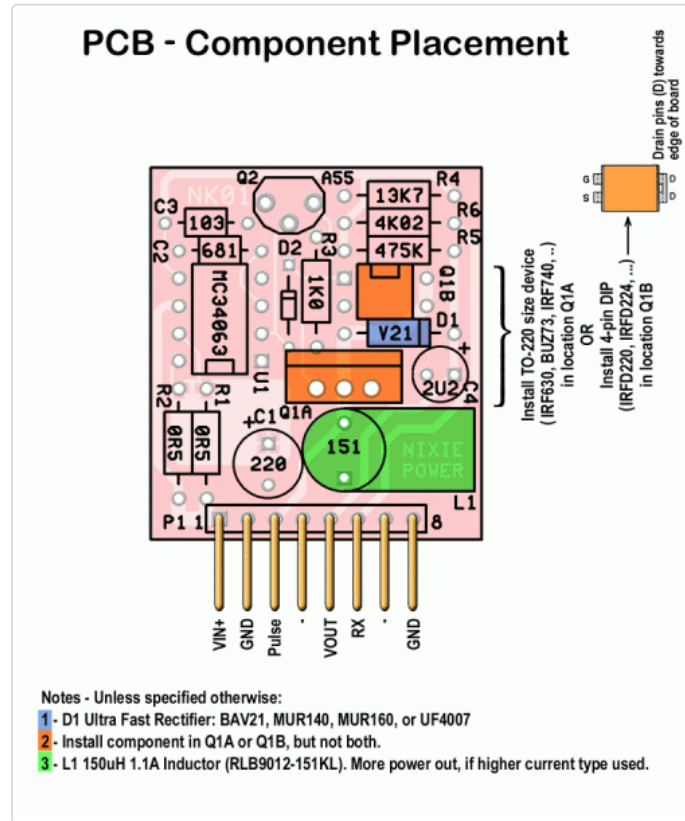
Bill of Materials:			
Ref Designator	Qty	Description	Mfr Part No.
C2	1	680pf, 50V, 10% Ceramic	Generic 680pf Ceramic (681)
C3	1	0.01uf, 50V, 10% Ceramic	Generic 0.01uf Ceramic (103)
C4	1	2.2uf, 250V AL Electrolytic	Panasonic ECA-2EM2R2
C1	1	220uf, 25V, Lo ESR Electrolytic	Panasonic EEU-FM1E221
R1, R2	2	0.5Ω, 1/4W, 5% Carbon Film	Xicon (Mouser) 291-0.5-RC
R3	1	1K, 1/4W, 5% Carbon Film	Generic 1/4W, 5% Carbon Film
R6	1	4.02K, 1/4W, 1% Metal Film (4021)	Generic 1/4W, 1% Metal Film
R4	1	13.7K, 1/4W, 1% Metal Film (1372)	Generic 1/4W, 1% Metal Film
R5	1	475K, 1/4W, 1% Metal Film (4753)	Generic 1/4W, 1% Metal Film
L1	1	100uH, 1.4A, Drum Core Inductor	Bourns RLB9012-101KL
D2	1	Small Signal Silicon Diode, 4nS	Generic 1N914, or 1N4148
D1	1	250PRV Ultra Fast Rectifier, 50nS	NXP BAV21, or MUR140
Q1A or Q1B	1	200V Power N-FET, TO-220	Generic IRF630, or IRF740, or Vishay IRFD220
Q2	1	60V PNP Transistor, TO-92	Generic MPSA55, or KSP2907
U1	1	MC34063 Switch-Mode Controller	Generic MC34063 DIP
P1	1	8-pin single row Hdr, 0.100" Pitch	Any
PCB	1	NK01 bare PCB	Tortugascula NK01
RX: Output Voltage Resistor			
1		V <sub>OUT</sub> = 45V, RX = Open Circuit	I <sub>OUT</sub> max = 120mA
		= 60V, RX = 33K	= 90mA
		= 75V, RX = 15K	= 72mA
		= 90V, RX = 9.1K	= 60mA
		= 100V, RX = 6.8K	= 55mA
		= 120V, RX = 3.9K	= 45mA
		= 150V, RX = 1.5K	= 36mA
		= 170V, RX = 680Ω	= 32mA
		= 180V, RX = 330Ω	= 30mA
		= 190V, RX = Short Pin 6 to Gnd (2 or 8)	= 28mA
Suppliers: mouser.com, digikey.com			

Towards the bottom of the parts list are more value options for RX. Note the maximum output current. This supply outputs 5.5watts. So at a lower voltage output like 45V, it can deliver up to 120mA. This maximum current available drops, as the output voltage is set to a higher value. At 170V, the minimum value used in most nixie clocks, it can only deliver 32mA. This is still adequate for a 6 digit IN-18 clock, since each of those tubes drawing 4mA (recommended minimum), will draw 24mA total.

D1 is labelled BAV21, but a MUR140, or UF4007, will work just the same in this application. Primary concern is a part that's rated for at least 200PRV, and with a switching speed faster than 75nS. If it meets these two specs it will work.

Likewise, with D2. Any fast general purpose diode will do. Main importance is that it switches faster than 25nS. PIV rating is unimportant.

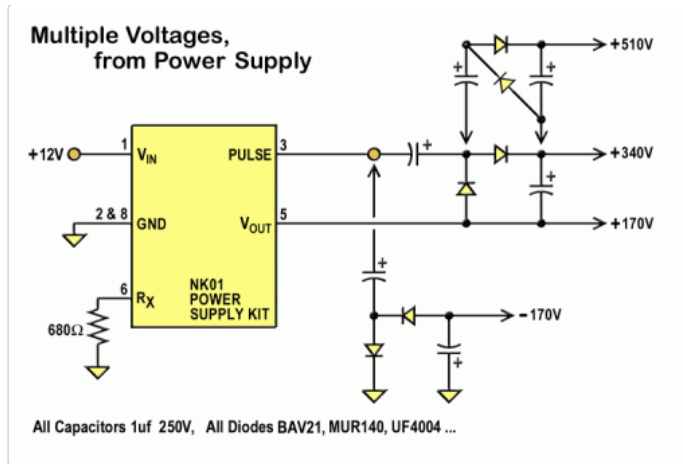
Below is the assembly guide ([click on it to enlarge](#)):



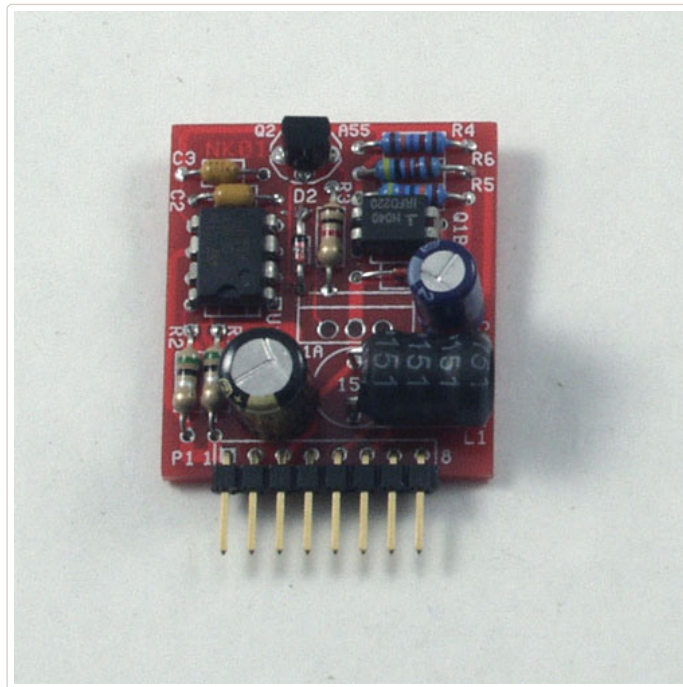
The board has locations for two package types of power FET, a TO-220 (at location Q1A), and 4-pin DIP (at location Q1B). Only one type of FET is provided with the kit, and only one FET should be installed. The other location should be left open. The output can be increased from the 5.5 watts, if a beefier coil (L1), is used. The coil (inductor) provided, can handle a maximum input current of 1.4A. If a higher current coil (given the same inductance), is used, then the output power will be increased. Also note, a higher current FET, may also be needed, and the value of C2, may need to be increased, to allow the coil to ramp up to the higher current. R1 and R2, may also need to be shorted, since they offer over current protection, which will also limit the coils max current.

The Ultrafast rectifier, D1, can be one of several types. **A BAV21, which comes in a small DO-35 glass package, and looks just like the 1N4148 (D2). Please do not mix these two up. The BAV21 should come with taped labels on its leads.** This location can also fit the larger DO-41 package. The MUR140 and UF4007 come in the DO-41 package. So does the 1N4007. But don't confuse a UF4007 with a 1N4007. They are two different parts. This supply needs ultrafast rectifiers like those recommended. The 1N4007 switches at way too slow of a rate.

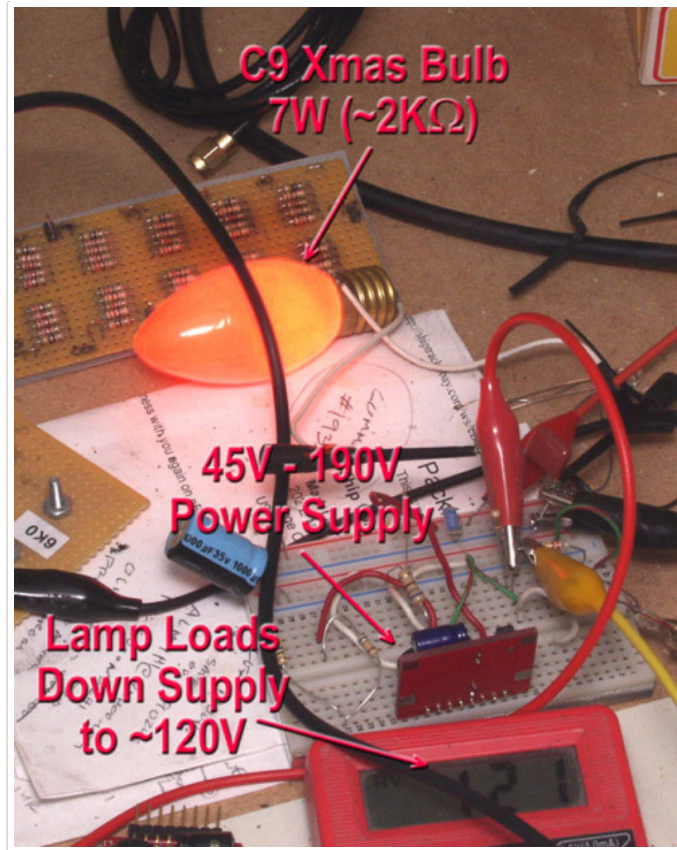
A "Pulse" output has also been provided, to make the circuit even more flexible. This output allows you to add extra output voltages. Either voltage multipliers (x2, x3, ...), and/or a negative voltage. Below is a drawing showing how to get extra voltages out of this supply ([click on it to enlarge](#)):



The finished board !



Here is the Pre-assembled version in action (Below):



**IMPORTANT:** This is NOT the older (non-"A") kit version, but the pre-assembled surface mount version, and the new "A" version, on sale as of Sept 12, 2013. The pre-assembled version can output 7 watts of power (6 watts recommended max), while the older kit can only output 5 watts, with the parts shipped in the kit. The new "A" version kit, can output over 6W, while only 5.5W is recommended.

To check how good competitors are, connect their output to a C7 Christmas light, and walk away for a few hours. See if its still working, when you come back. You can also try this with the new "A" version kit, but not the older (non-"A") kit. Its not as beefy !

End.